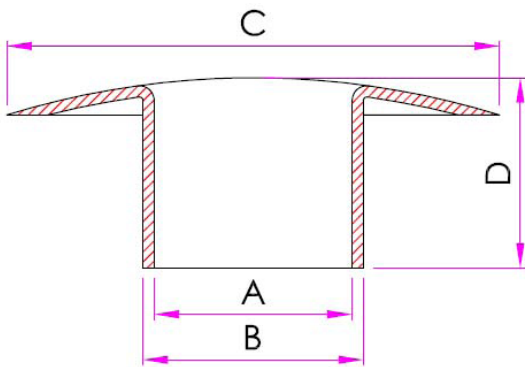




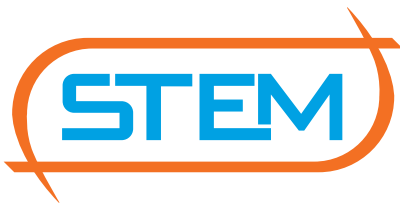
POLYESTER FIBER INSULATION
 FLEXIBLE FOAM INSULATION
 RIGID PU FOR BOILER

SLEEVES

- Wide set of diameters
- Tools building for special products
- Supply: standard, fireproof, coloured and printed



CODE	DIMENSIONS [mm]				
	Inches	A	B	C	D
802001	3/8 "	21	24	40	14
802005	1/2 "	26	29	66	26
802009	3/4 "	33	36	79	27
802002	1"	42	45	79	29
802004	1" 1/4	48	51	89	30
802003	1" 1/2	58	61	99	30
0802003-R	1" 1/2 reduced	56	60	107	30
802006	2"	71	74	108	32
802014	2" 1/2	89	92	125	28
802008	3"	100	103	133	26
0802008-95	3" reduced	95	98	144	30
80216	4"	127	130	171	30
802010	Direct injection				



**POLYESTER FIBER INSULATION
FLEXIBLE FOAM INSULATION
RIGID PU FOR BOILER**

CHARACTERISTICS	VALUES	UNIT	ASTM NORM
Chemical composition	Low density polyethylene; Low density polyethylene UV resistant		
Color	On demand		
Density	0,9	g/cm ³	D 1505
Melt - Volume Flow Index	20	g/10 min	D 1238
Strain at Yield	9	%	D 638
Stress at Break	10	MPa	D 638
Strain at Break	420	%	D 638
Tensile Moduls	220	MPa	D 790
Softening Temperature	84	°C	D 1525
Brittleness Temperature	< -20	°C	D 746
Melt Temperature	107	°C	
Hardness	37		D 2240

CHARACTERISTICS	VALUES	UNIT	ASTM NORM
Chemical composition	Low density polyethylene, self-extinguishing		
Color	Nero		
Density	1,19	g/cm ³	ISO 1183
Melt Volume Flow Index	18	cm ³ /10 min	ISO 1133
Strain at Yieled	10	%	ISO 527-1/2
Stress at Break	7,5	MPa	ISO 527-1/2
Strain at Breack	70	%	ISO 527-1/2
Tensile Moduls	350	MPa	ISO 527-1/2
Softening Temperature	75	°C	ISO 306/A
Melt Temperraature	160-180	°C	
Mould Temperraature	30-50	°C	
Measures	See table		
Fire resistance classification	V-0		UL 94